

Terms and Conditions

The Library provides access to digitized documents strictly for noncommercial educational, research and private purposes and makes no warranty with regard to their use for other purposes. Some of our collections are protected by copyright. Publication and/or broadcast in any form (including electronic) requires prior written permission from the Library.

Each copy of any part of this document must contain there Terms and Conditions. With the usage of the library's online system to access or download a digitized document you accept there Terms and Conditions.

Reproductions of material on the web site may not be made for or donated to other repositories, nor may be further reproduced without written permission from the Library

For reproduction requests and permissions, please contact us. If citing materials, please give proper attribution of the source.

Imprint:

Director: Mag. Renate Plöchl

Deputy director: Mag. Julian Sagmeister

Owner of medium: Oberösterreichische Landesbibliothek

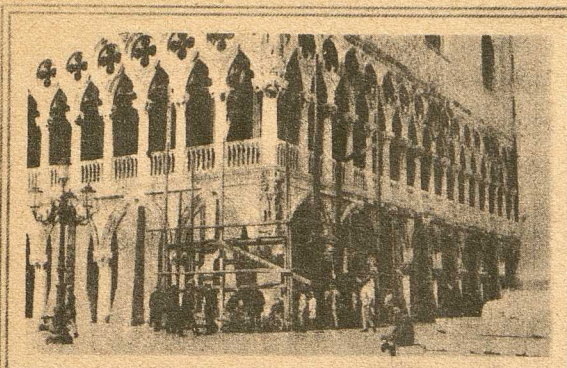
Publisher: Oberösterreichische Landesbibliothek, 4021 Linz, Schillerplatz 2

Contact:

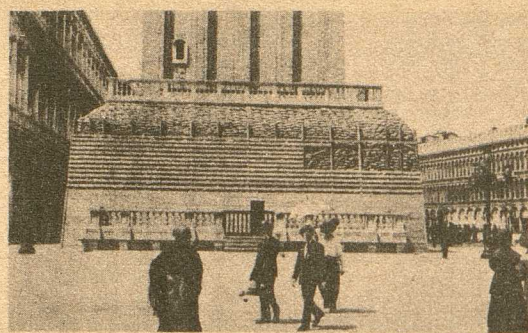
Email: [landesbibliothek\(at\)ooe.gv.at](mailto:landesbibliothek(at)ooe.gv.at)

Telephone: +43(732) 7720-53100

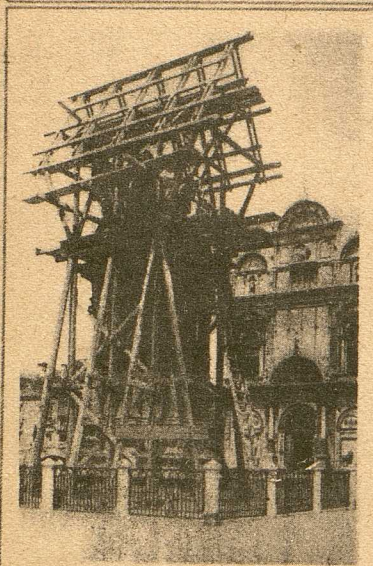
Venedig im Zeichen des Krieges



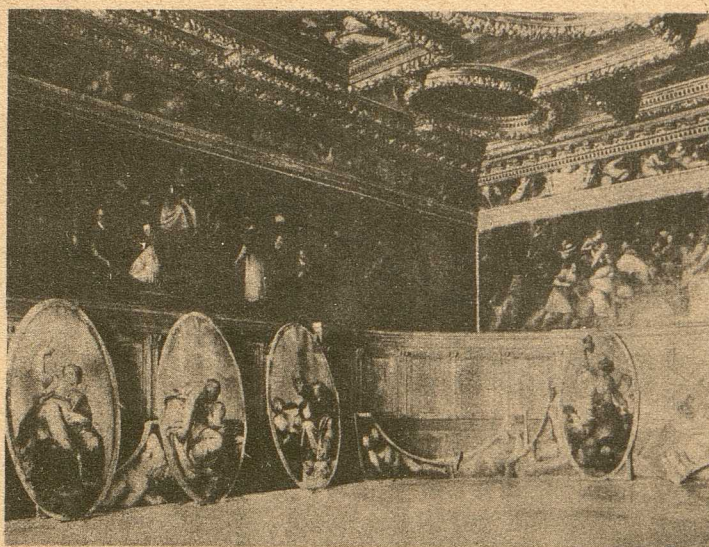
BRICKWORK SUPPORTING THE ARCHES AND A MASONRY PROTECTION FOR SCULPTURES IN THE MAKING: A CORNER OF THE PALACE OF THE DOGES.



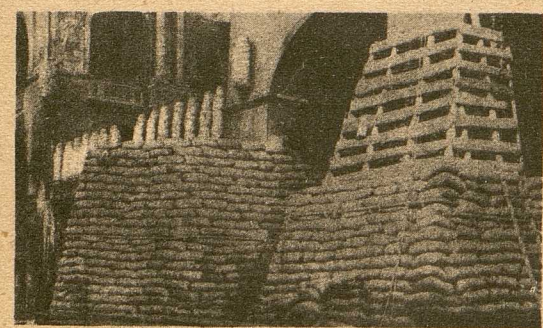
PROTECTED BY SAND-BAGS: THE RECONSTRUCTED LOGGETTA (OR VESTIBULE) OF THE FAMOUS CAMPANILE.



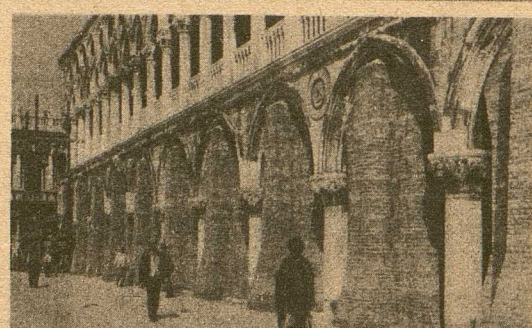
BEING ENCLOSED: ERECTING THE PROTECTION FOR THE COLLEONI STATUE.



REMOVED FROM THEIR PLACES TO BE SENT TO A PLACE OF SAFETY: CEILING PAINTINGS OF A ROOM IN THE PALACE OF THE DOGES.



INSIDE ST. MARK'S, THE MOST FAMOUS CHURCH OF VENICE, A WORLD-RENOWNED "BYZANTINE" STRUCTURE: SAND-BAGS.



SHOWING THE MANNER IN WHICH THE ARCHES ARE STRENGTHENED BY BRICK SUPPORTS: A PART OF THE ARCADE OF THE PALACE OF THE DOGES.

Venice "armoured" against aircraft: monuments protected.

Geschützte Denkmäler des gegen Luftangriffe gepanzerten Venedig.

Oben links: Eine Ecke des Dogenpalastes. — Oben rechts: Die mit Sandsäcken geschützte Halle des berühmten Glockenturmes. — Mitte links: Bau eines Gerüstes um das Colleoni-Denkmal. — Mitte rechts: Abgenommene Deckengemälde im Dogenpalast werden in Sicherheit gebracht. — Unten links: In Venedigs berühmter Markuskirche. — Unten rechts: Steinmauern stützen die Bogen der Arkaden des Dogenpalastes.