

Terms and Conditions

The Library provides access to digitized documents strictly for noncommercial educational, research and private purposes and makes no warranty with regard to their use for other purposes. Some of our collections are protected by copyright. Publication and/or broadcast in any form (including electronic) requires prior written permission from the Library.

Each copy of any part of this document must contain there Terms and Conditions. With the usage of the library's online system to access or download a digitized document you accept there Terms and Conditions.

Reproductions of material on the web site may not be made for or donated to other repositories, nor may be further reproduced without written permission from the Library

For reproduction requests and permissions, please contact us. If citing materials, please give proper attribution of the source.

Imprint:

Director: Mag. Renate Plöchl

Deputy director: Mag. Julian Sagmeister

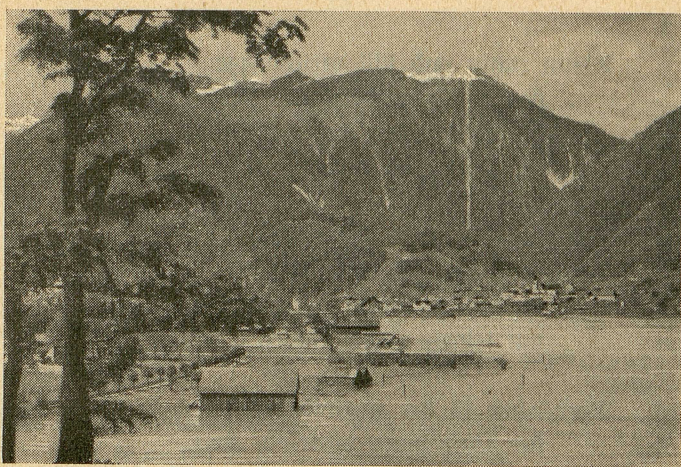
Owner of medium: Oberösterreichische Landesbibliothek

Publisher: Oberösterreichische Landesbibliothek, 4021 Linz, Schillerplatz 2

Contact:

Email: [landesbibliothek\(at\)ooe.gv.at](mailto:landesbibliothek(at)ooe.gv.at)

Telephone: +43(732) 7720-53100



Ebensee mit der Seilsehbahn.

Gewiß, wahrhaftig, schön zu schau'n,
liegt Ischl in seinem Bette,
betätschelt vom weißen Gisch der Traun,
umschlungen von der Alpen Kette.

Und lieb war es schon dazumals
vor beinah' dreihundertfünfzig Jahren,
als dem Ischler Waldmeister, Herrn Hans Rhals,
jener Gedanke eingefallen:

„Im Langbaththal in Ebensee
durch eine Röhrenleitung
kommt unserer Berge reichster Schatz
viel schneller zur Verbreitung.“

Zacharias Rhuttner wiederum war's,
der Hoffschreiber von Hallstatt,
der mit ewig zu gedenkender Feder
den Gedanken bracht aufs Blatt.