

Terms and Conditions

The Library provides access to digitized documents strictly for noncommercial educational, research and private purposes and makes no warranty with regard to their use for other purposes. Some of our collections are protected by copyright. Publication and/or broadcast in any form (including electronic) requires prior written permission from the Library.

Each copy of any part of this document must contain there Terms and Conditions. With the usage of the library's online system to access or download a digitized document you accept there Terms and Conditions.

Reproductions of material on the web site may not be made for or donated to other repositories, nor may be further reproduced without written permission from the Library

For reproduction requests and permissions, please contact us. If citing materials, please give proper attribution of the source.

Imprint:

Director: Mag. Renate Plöchl

Deputy director: Mag. Julian Sagmeister

Owner of medium: Oberösterreichische Landesbibliothek

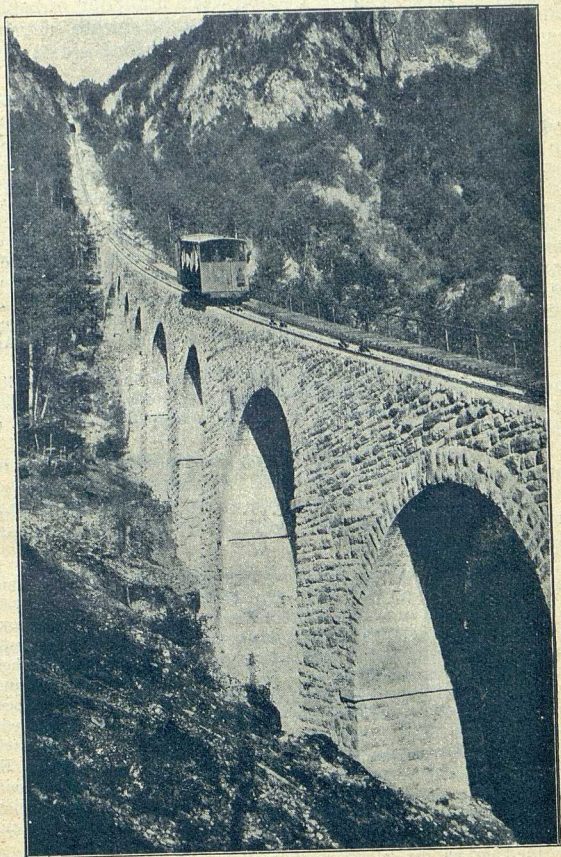
Publisher: Oberösterreichische Landesbibliothek, 4021 Linz, Schillerplatz 2

Contact:

Email: [landesbibliothek\(at\)ooe.gv.at](mailto:landesbibliothek(at)ooe.gv.at)

Telephone: +43(732) 7720-53100

Kaltern, St. Anton, Pfuss, Mitterdorf und St. Nikolaus bestehend, zählt 4500 Einw. und ist Sitz eines k. k.



Mendelbahn.

J. Gugler phot.

Bezirksgerichtes, Post- und Telegraphenamtes. Die Pfarrkirche mit Deckenfresken des Tiroler Malers Josef Schöpf