

Terms and Conditions

The Library provides access to digitized documents strictly for noncommercial educational, research and private purposes and makes no warranty with regard to their use for other purposes. Some of our collections are protected by copyright. Publication and/or broadcast in any form (including electronic) requires prior written permission from the Library.

Each copy of any part of this document must contain there Terms and Conditions. With the usage of the library's online system to access or download a digitized document you accept there Terms and Conditions.

Reproductions of material on the web site may not be made for or donated to other repositories, nor may be further reproduced without written permission from the Library

For reproduction requests and permissions, please contact us. If citing materials, please give proper attribution of the source.

Imprint:

Director: Mag. Renate Plöchl

Deputy director: Mag. Julian Sagmeister

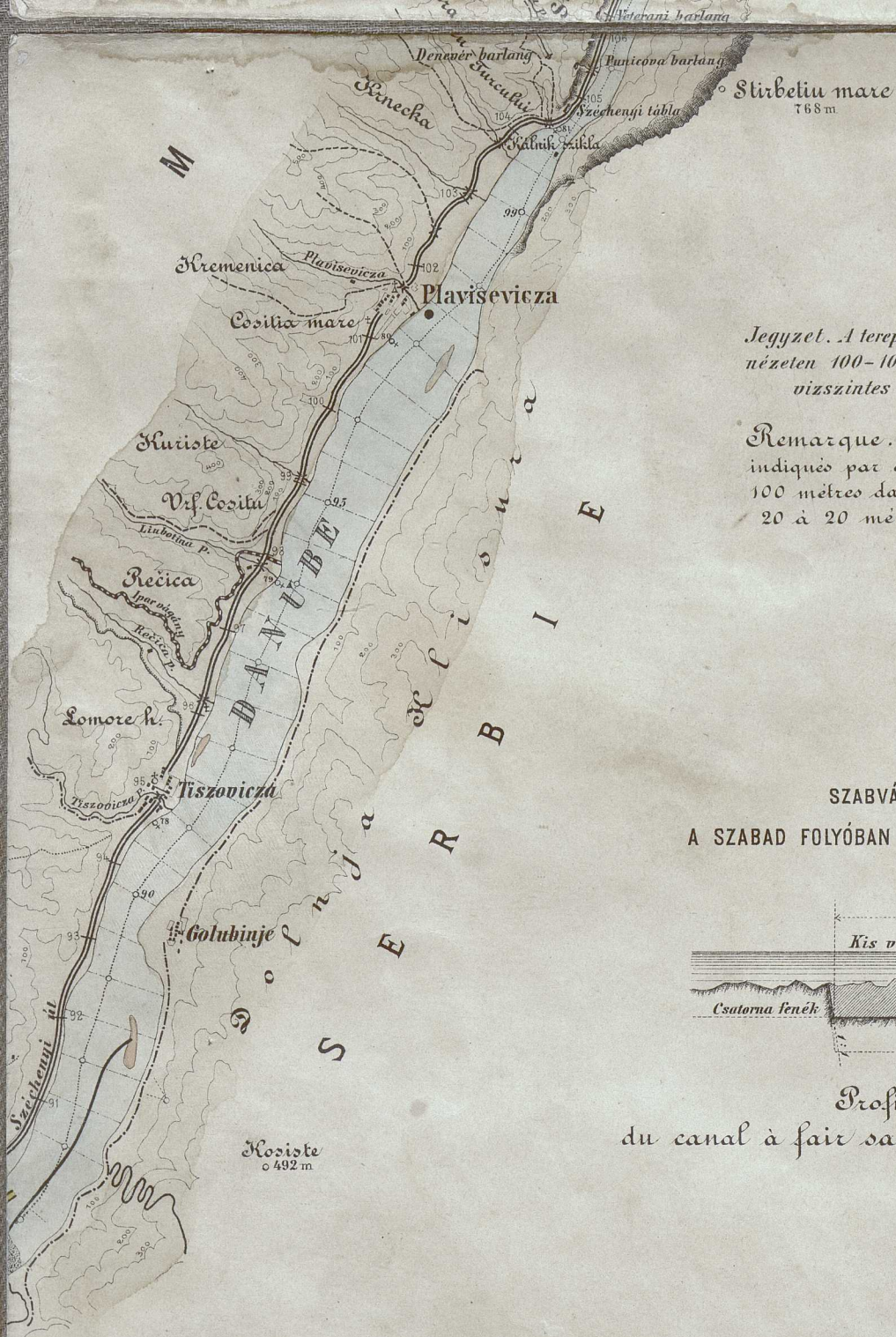
Owner of medium: Oberösterreichische Landesbibliothek

Publisher: Oberösterreichische Landesbibliothek, 4021 Linz, Schillerplatz 2

Contact:

Email: [landesbibliothek\(at\)ooe.gv.at](mailto:landesbibliothek(at)ooe.gv.at)

Telephone: +43(732) 7720-53100

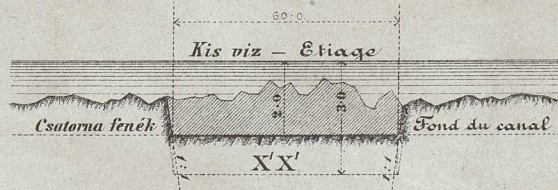


Jegyzet. A terep-emelkedések az általános átnézeten 100-100, a részletesen 20-20 méteres vízszintes rétegeket tüntetnek föl. -

Remarque. Les accidents du terrain sont indiqués par couches horizontales de 100 à 100 mètres dans le plan général et de 20 à 20 mètres dans le plan de détail.

XX

SAZBÁVNY SZELVÉNYE
A SZABAD FOLYÓBAN ROBBANTANDÓ CSATORNÁNAK



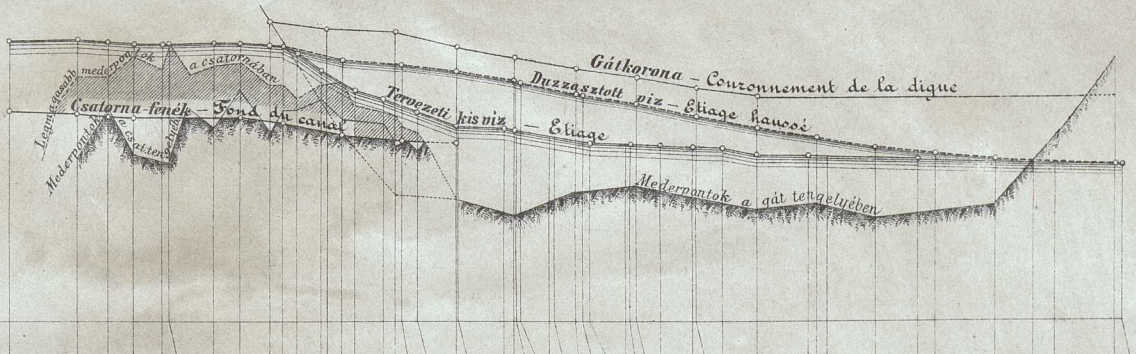
Profil normal
du canal à faire sauter au milieu du fleuve.

A JUCZ ZUHATAG
ÉS A PORECSKA-GOLUBINJEI SZORÍTÓGÁT HOSSZ-SZELVÉNYE.

Hosszmérték -
Echelle des longueurs
1: 25000

Magasság-mérték -
Echelle des hauteurs
1: 200

40 m. Adria fölött
40 m. au dessus de l'Adriatique



Szelvény száma	Folytatólagos távolság méterekben	Tervezeti kis víz	Duzzasztott víz	Gátkorona	Csatorna-fenék
	47-511	47-511	47-511	47-511	45-511
	186	47-493	47-493	47-493	45-493
	34	47-476	47-476	47-476	45-476
	0	47-459	47-459	47-459	45-459
	87	47-428	47-428	47-428	45-428
	182	47-427	47-427	47-427	45-427
	272	47-424	47-424	47-424	45-424
	361	47-419	47-419	47-419	45-419
	458	47-345	47-345	47-345	45-345
	560	47-310	47-310	47-310	45-310
	633	46-644	46-644	46-644	44-960
	700	46-174	46-174	46-174	44-960
	841	45-983	45-983	45-983	44-839
	900	45-597	45-597	45-597	44-839
	957	45-165	45-165	45-165	44-665
	1060	45-131	45-131	45-131	44-665
	1095	45-112	45-112	45-112	44-665
	1244	45-112	45-112	45-112	44-665
	1295	44-945	44-945	44-945	44-665
	1334	44-915	44-915	44-915	44-665
	1415	44-850	44-850	44-850	44-665
	1415	44-739	44-739	44-739	44-665
	1415	44-704	44-704	44-704	44-665
	1415	44-659	44-659	44-659	44-665
	1415	44-635	44-635	44-635	44-665
	1415	44-575	44-575	44-575	44-665
	1415	44-575	44-575	44-575	44-665
	1415	44-512	44-512	44-512	44-665
	1415	44-433	44-433	44-433	44-665
	1415	44-365	44-365	44-365	44-665
	1415	44-222	44-222	44-222	44-665
	1415	44-163	44-163	44-163	44-665
	1415	44-337	44-337	44-337	44-665
	1415	44-249	44-249	44-249	44-665
	1415	44-184	44-184	44-184	44-665
	1415	44-178	44-178	44-178	44-665

Profil en long de la cataracte Jucz
et de la digue d'encaissement Porecska-Golubinje.