

Terms and Conditions

The Library provides access to digitized documents strictly for noncommercial educational, research and private purposes and makes no warranty with regard to their use for other purposes. Some of our collections are protected by copyright. Publication and/or broadcast in any form (including electronic) requires prior written permission from the Library.

Each copy of any part of this document must contain there Terms and Conditions. With the usage of the library's online system to access or download a digitized document you accept there Terms and Conditions.

Reproductions of material on the web site may not be made for or donated to other repositories, nor may be further reproduced without written permission from the Library

For reproduction requests and permissions, please contact us. If citing materials, please give proper attribution of the source.

Imprint:

Director: Mag. Renate Plöchl

Deputy director: Mag. Julian Sagmeister

Owner of medium: Oberösterreichische Landesbibliothek

Publisher: Oberösterreichische Landesbibliothek, 4021 Linz, Schillerplatz 2

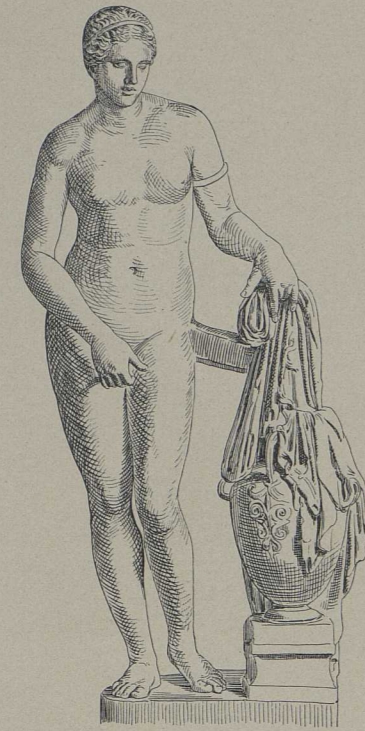
Contact:

Email: [landesbibliothek\(at\)ooe.gv.at](mailto:landesbibliothek(at)ooe.gv.at)

Telephone: +43(732) 7720-53100



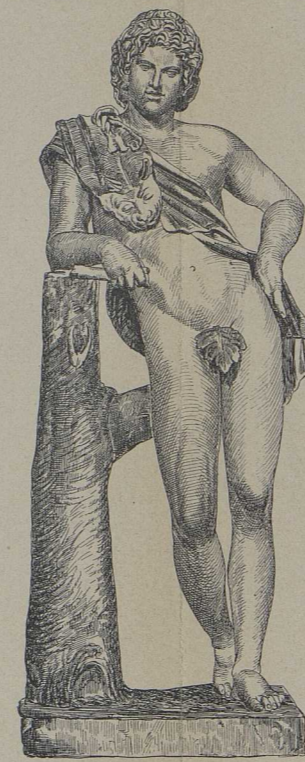
1.
Eirene mit dem Plutos nach Kephisodotos dem Älteren (München) [S. 642 f.]
3a.
Torso eines ausruhenden Satyrs nach Praxiteles (Louvre) [S. 644].
3b.
Ausruhender Satyr (Kapitol) [S. 644].



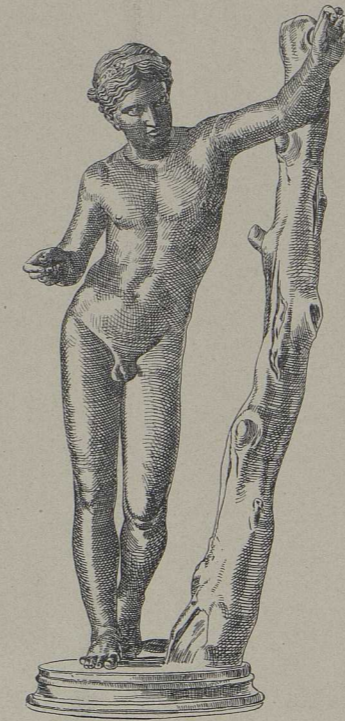
2a. Nach der knidischen Aphrodite des Praxiteles (Vatikan) [S. 643 f.]



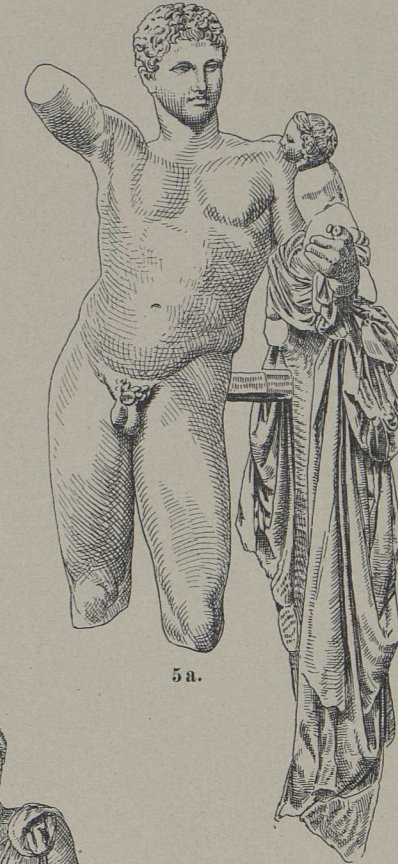
3a.



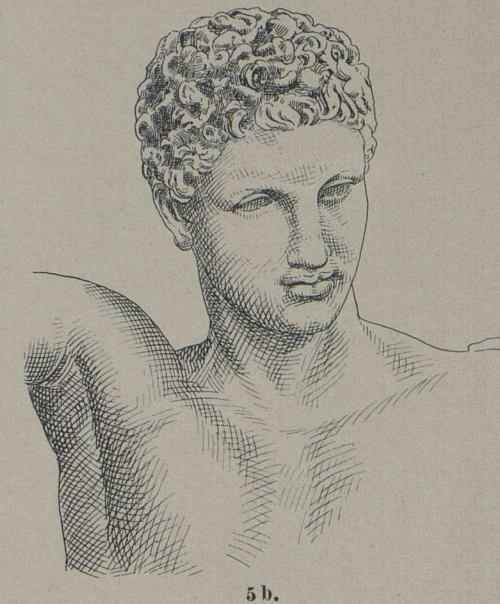
3b.



4.



5a.

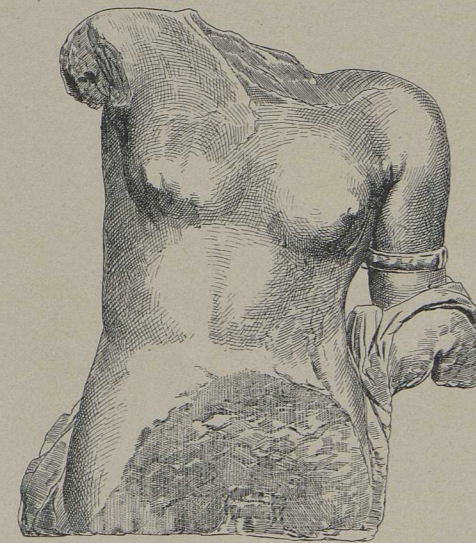


5b.

4. Nach dem Apollon Sauroktonos des Praxiteles (Villa Albani) [S. 645].
5a. Hermes mit dem Dionysosknaben, Originalwerk des Praxiteles aus Olympia; **b.** Kopf desselben [S. 644].
7. Statuette der Artemis, aus Kition (Cypern) — Typus der Frau in praxitelischer Ruhestellung [S. 646].



2b. Praxitelischer Aphroditekopf, im Besitz des Herrn v. Kaufmann (Berlin).



2c. Torso einer Nachbildung der knidischen Aphrodite des Praxiteles (Berlin).



6a. Büste des „Eubuleus“ (Jakchos) aus Eleusis (Athen) [S. 645].



6b. Sog. „Virgil“ im Typus des „Eubuleus“ (Louvre) [S. 645].



7.



8a.



8b.

8a u. b. Köpfe von den Giebelkulpturen des Tempels von Tegea, eines Werkes des Skopas [S. 648].